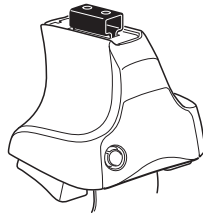
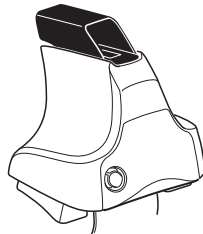
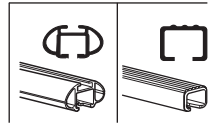


Kit 1685

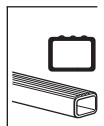
VOLVO V40, 5-dr Hatchback, 12-



754 Rapid System
480R Rapid Traverse (North America)



480 Traverse (North America)

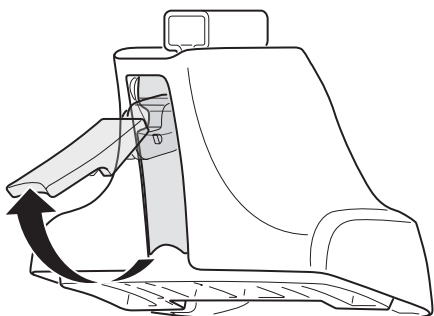


- 754 Rapid System: x1 (ruler), x4 (cubes), x4 (754 Rapid Traverse unit), x4 (screws)
- 480R Rapid Traverse (North America): x1 (ruler), x4 (480R Rapid Traverse unit), x4 (cubes), x4 (screws)
- 480 Traverse (North America): x1 (ruler), x4 (480 Traverse unit), x4 (cubes), x4 (screws)

- Bar: x2
- Hardware (left): x2 (23 mm), x2 (23 mm), x4 (screws), x4 (screws)
- Hardware (right): x1 (17 mm), x2 (23 mm), x2 (23 mm), x4 (screws)
- (North America): x2 (23 mm), x2 (23 mm), x2 (23 mm), x2 (cubes)

- 1235 x1
- 1236 x1
- 1237 x1
- 1238 x1
- 03 x2
- 348 x1
- 349 x1
- FR/FL/RL/RR label: x1

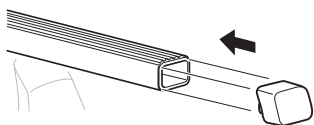
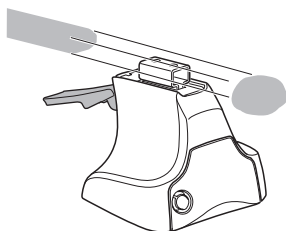
1



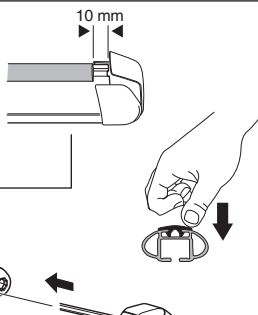
2



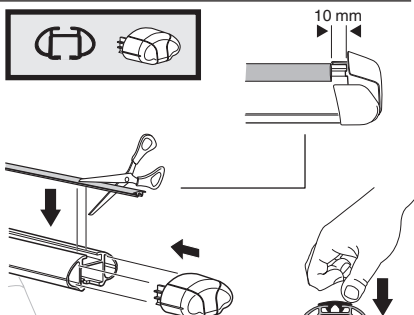
754 Rapid System
480R Rapid Traverse
(North America)



x4



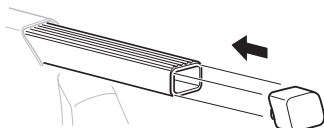
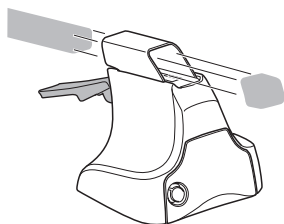
x4



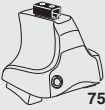
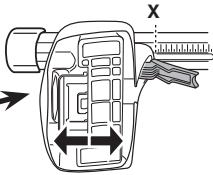
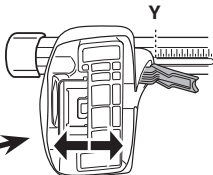
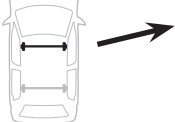
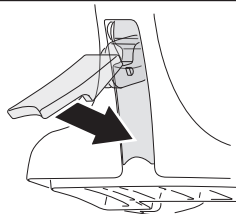
x4



480 Traverse
(North America)

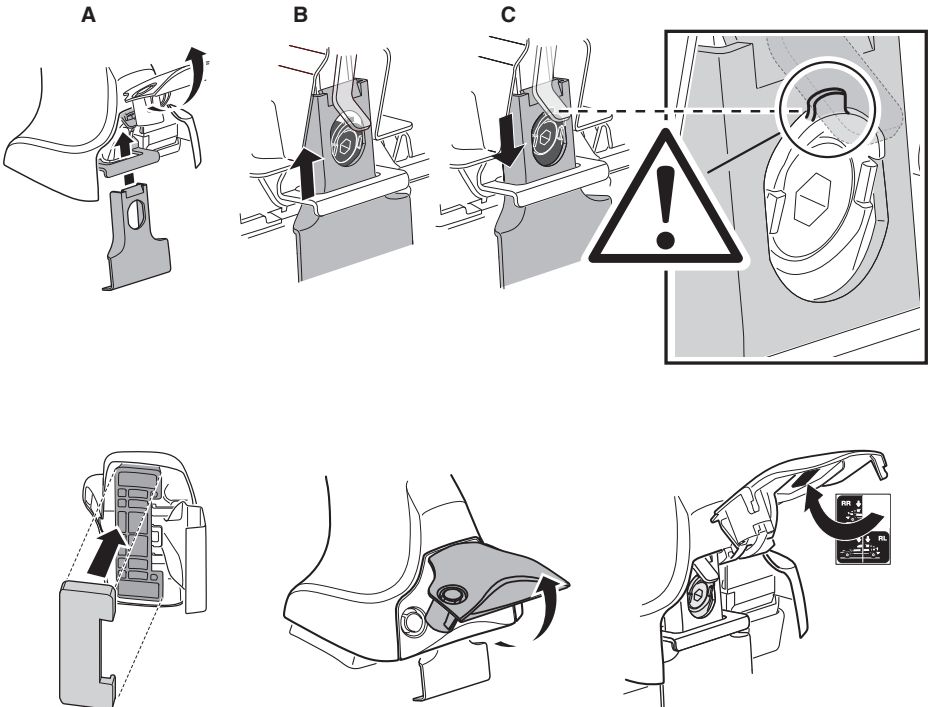
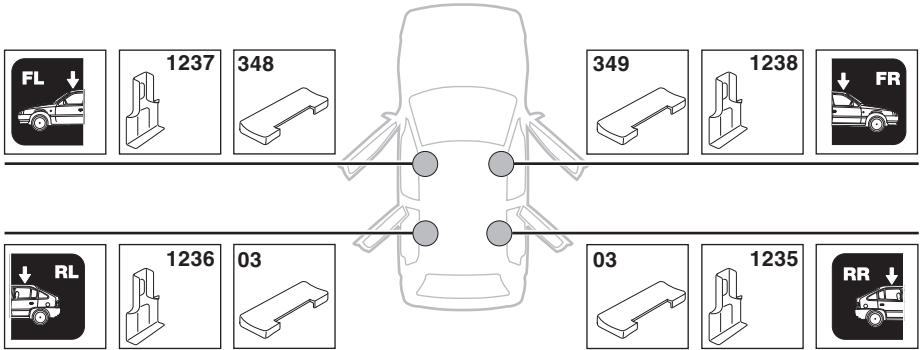


x4

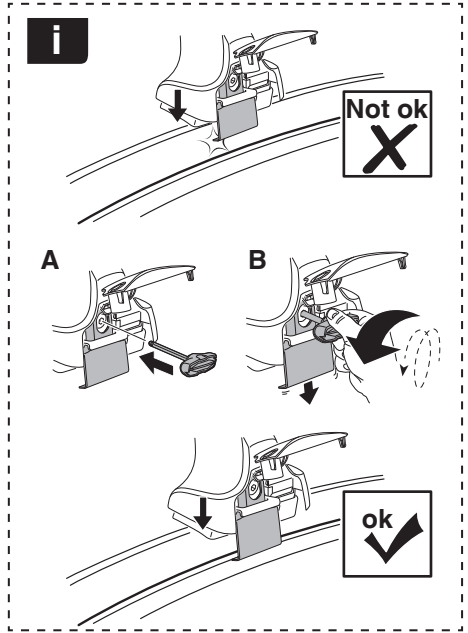
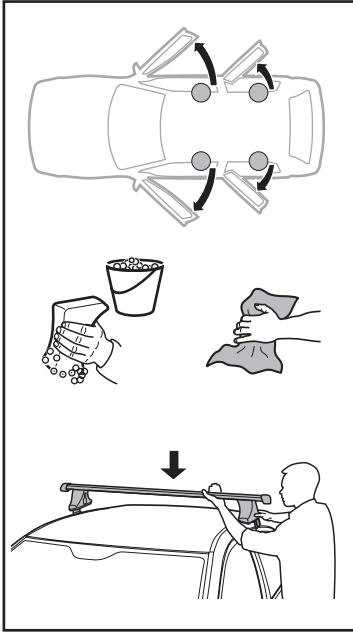
3**754** Rapid System**VOLVO V40, 5-dr Hatchback, 12-****X****41****VOLVO V40, 5-dr Hatchback, 12-****Y****29****3****480R** Rapid Traverse**480** Traverse**(North America)****VOLVO V40, 5-dr Hatchback, 12-****X inch****X mm****41 3/4"****1061 mm****VOLVO V40, 5-dr Hatchback, 12-****Y inch****Y mm****37"****941 mm****4**

5

VOLVO V40, 5-dr Hatchback, 12-

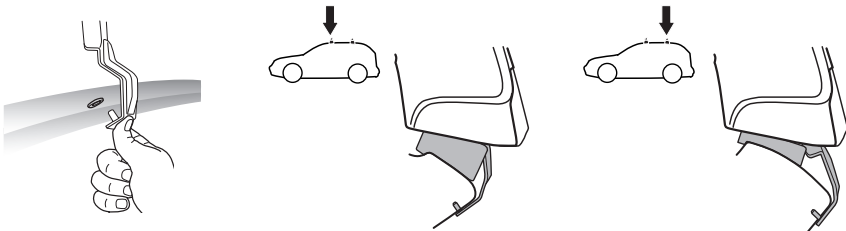
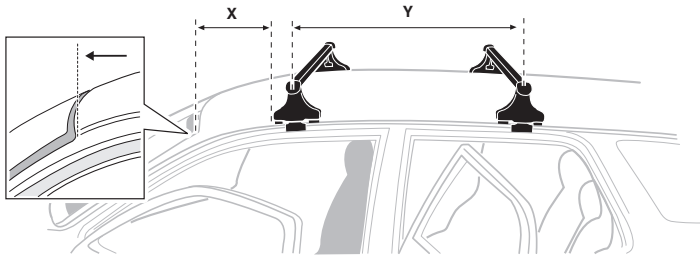


6

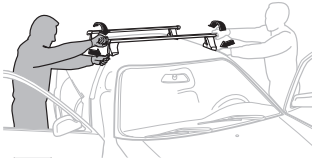


VOLVO V40, 5-dr Hatchback, 12-

X mm	Y mm	X inch	Y inch
220 mm	765 mm	8 5/8"	30 1/8"



7



GB/US Tighten alternately
D Die Schrauben abwechselnd anziehen
F Serrer alternativement chaque côté
NL Afwisselend aan de linker- en de rechterkant aandraaien
I Alternare il serraggio delle viti
E Apretar alternativamente
PT Aperte alternadamente
S Dra åt växelvis
FIN Kierrä vuorotellen
EST Pinguldage vaheldumisi
LAT Pieļieciet pamišus
LIT Užsukinėkite pakaitomis
PL Śruby dokręcaj naprzemiennie
RU Затягивайте попеременно

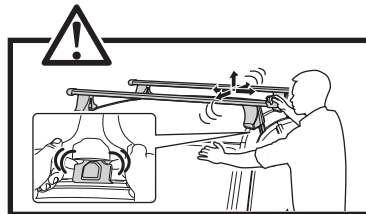
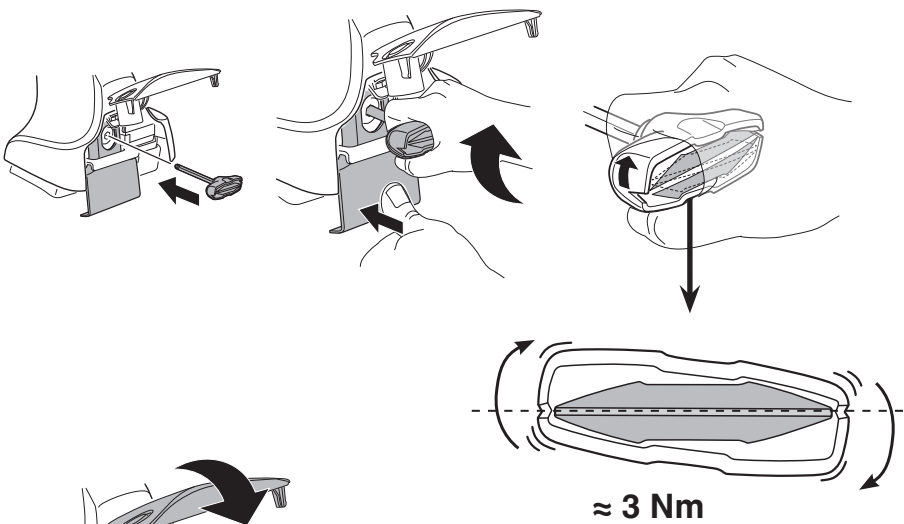
CZ Pokręťta bagażnika dokręcaj naprzemiennie.
SK Dofahajte striedavo
SLO Privijajte izmenično.
HR Naizmjenočno zategnite
HU Egymástól függetlenül szorítandó
GR Σφιγγείτε εναλλάξ
TR Dönüşümlü sıkın

中文 交替拧紧

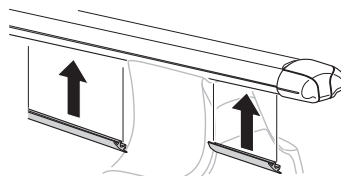
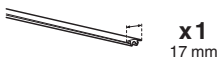
한국어 번갈아 가며 조이십시오.

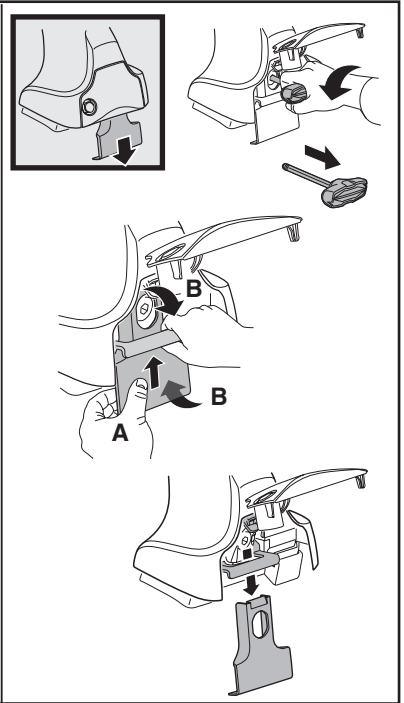
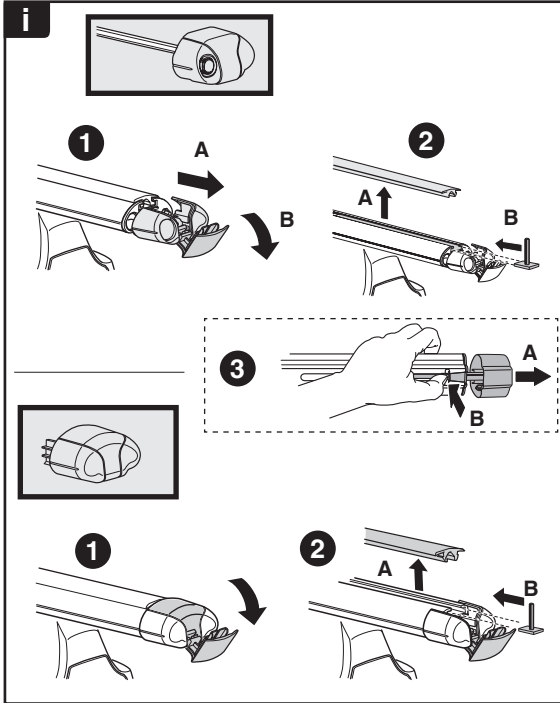
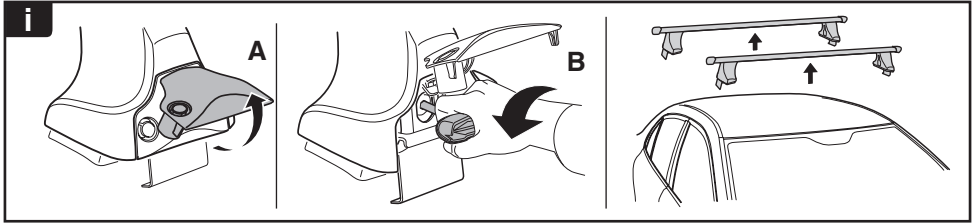
日本語 交互に締め付けてください。

ไทย ชันในแบบสลับ



8





THULE
SWEDEN
**ONE
KEY
SYSTEM**



- 544** (x4)
 - 596** (x6)
 - 588** (x8)
 - 510** (x10)
 - 452** (x12)
- NA
EUR
ASIA



WW ▶ Thule Sweden AB, Box 69, 330 33 Hillerstorp, SWEDEN
NA ▶ Thule Inc., 42 Silvermine Road, Seymour, Connecticut 06483, USA

@ info@thule.com
customer.service@thule.com

www.thule.com