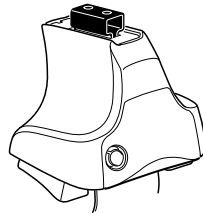
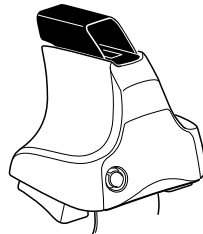
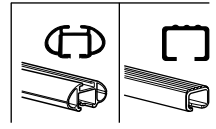


Kit 1672

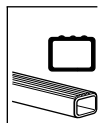
- SEAT Mii**, 3-dr Hatchback, 12-
- SEAT Mii**, 5-dr Hatchback, 12-
- SKODA Citigo**, 3-dr Hatchback, 12-
- SKODA Citigo**, 5-dr Hatchback, 12-
- VOLKSWAGEN Up**, 3-dr Hatchback, 12-
- VOLKSWAGEN Up**, 5-dr Hatchback, 12-



754 Rapid System
480R Rapid Traverse (North America)



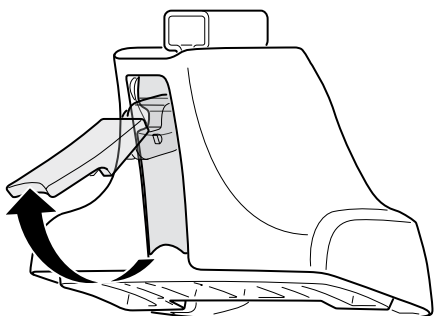
480 Traverse (North America)



754 Rapid System
480R Rapid Traverse (North America)

480 Traverse (North America)

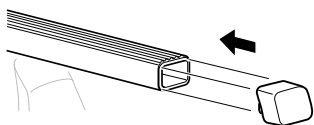
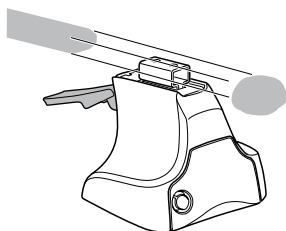
1



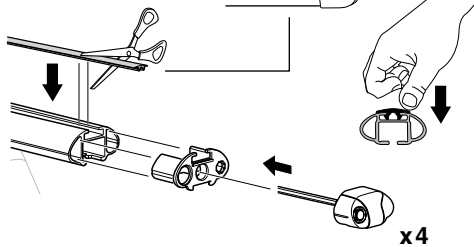
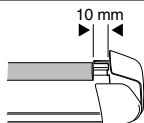
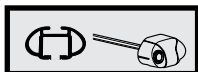
2



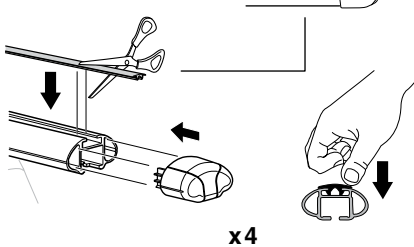
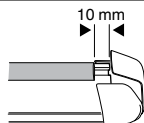
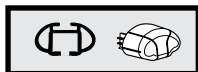
754 Rapid System
480R Rapid Traverse
(North America)



x4



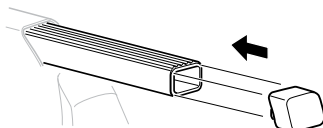
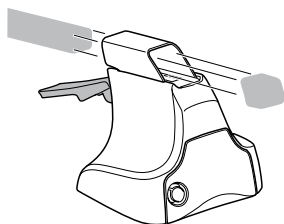
x4



x4

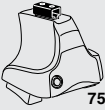


480 Traverse
(North America)

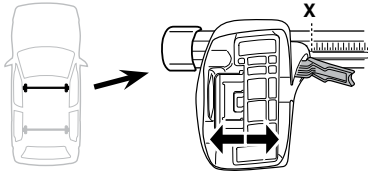


x4

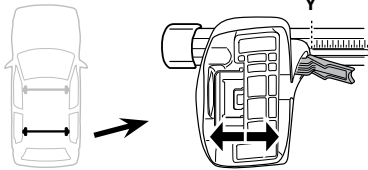
3



754 Rapid System



	X
SEAT Mii, 3-dr Hatchback, 12-	37,5
SEAT Mii, 5-dr Hatchback, 12-	37,5
SKODA Citigo, 3-dr Hatchback, 12-	37,5
SKODA Citigo, 5-dr Hatchback, 12-	37,5
VOLKSWAGEN Up, 3-dr Hatchback, 12-	37,5
VOLKSWAGEN Up, 5-dr Hatchback, 12-	37,5



	Y
SEAT Mii, 3-dr Hatchback, 12-	35
SEAT Mii, 5-dr Hatchback, 12-	35
SKODA Citigo, 3-dr Hatchback, 12-	35
SKODA Citigo, 5-dr Hatchback, 12-	35
VOLKSWAGEN Up, 3-dr Hatchback, 12-	35
VOLKSWAGEN Up, 5-dr Hatchback, 12-	35

3



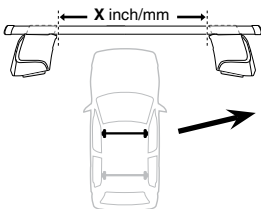
480R Rapid Traverse



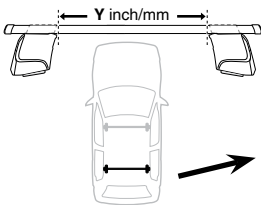
480 Traverse



(North America)

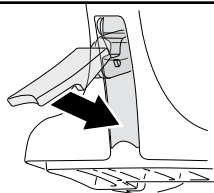


	X inch	X mm
SEAT Mii, 3-dr Hatchback, 12-	40 ³ / ₈ "	1026 mm
SEAT Mii, 5-dr Hatchback, 12-	40 ³ / ₈ "	1026 mm
SKODA Citigo, 3-dr Hatchback, 12-	40 ³ / ₈ "	1026 mm
SKODA Citigo, 5-dr Hatchback, 12-	40 ³ / ₈ "	1026 mm
VOLKSWAGEN Up, 3-dr Hatchback, 12-	40 ³ / ₈ "	1026 mm
VOLKSWAGEN Up, 5-dr Hatchback, 12-	40 ³ / ₈ "	1026 mm



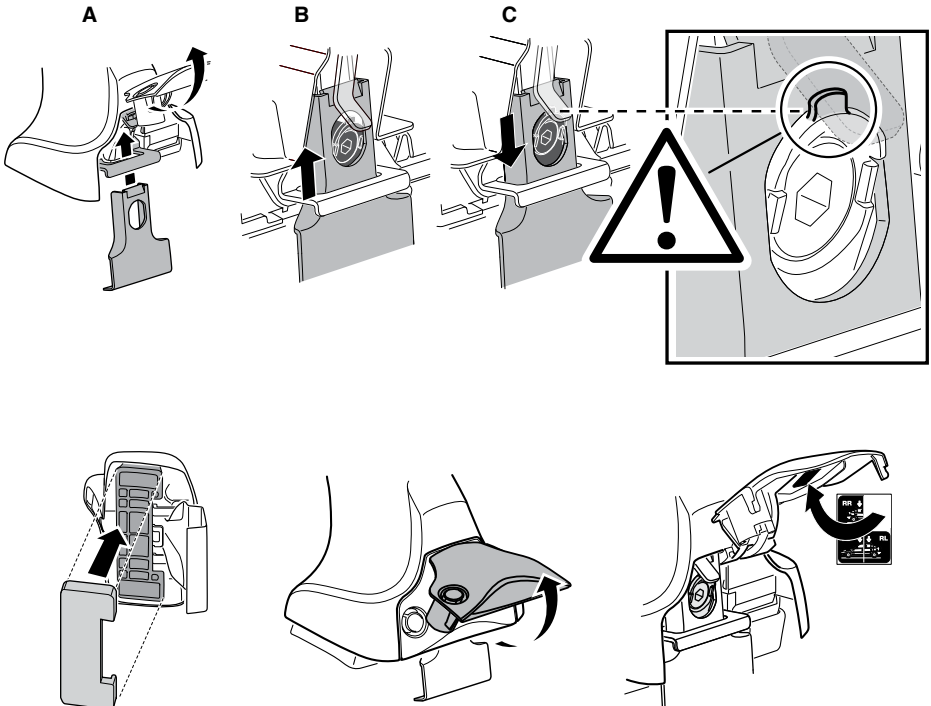
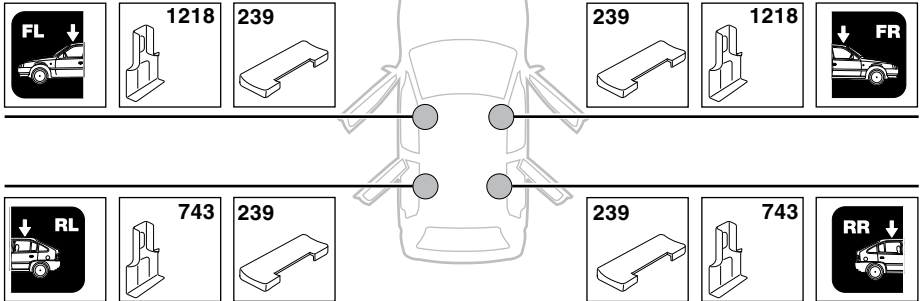
	Y inch	Y mm
SEAT Mii, 3-dr Hatchback, 12-	39 ³ / ₈ "	1001 mm
SEAT Mii, 5-dr Hatchback, 12-	39 ³ / ₈ "	1001 mm
SKODA Citigo, 3-dr Hatchback, 12-	39 ³ / ₈ "	1001 mm
SKODA Citigo, 5-dr Hatchback, 12-	39 ³ / ₈ "	1001 mm
VOLKSWAGEN Up, 3-dr Hatchback, 12-	39 ³ / ₈ "	1001 mm
VOLKSWAGEN Up, 5-dr Hatchback, 12-	39 ³ / ₈ "	1001 mm

4

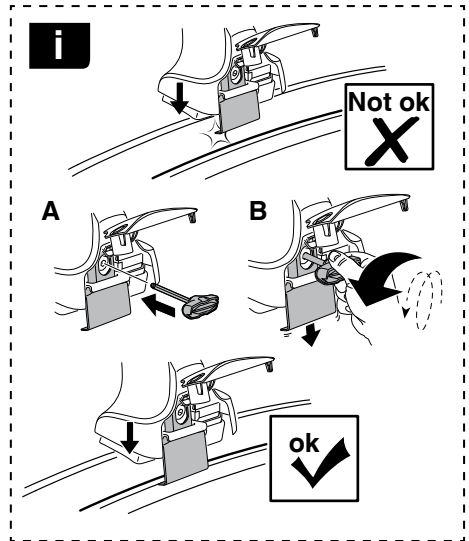
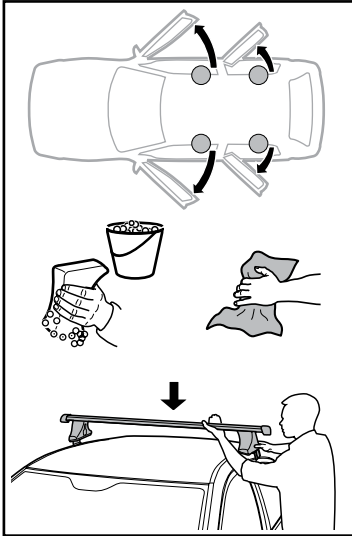


5

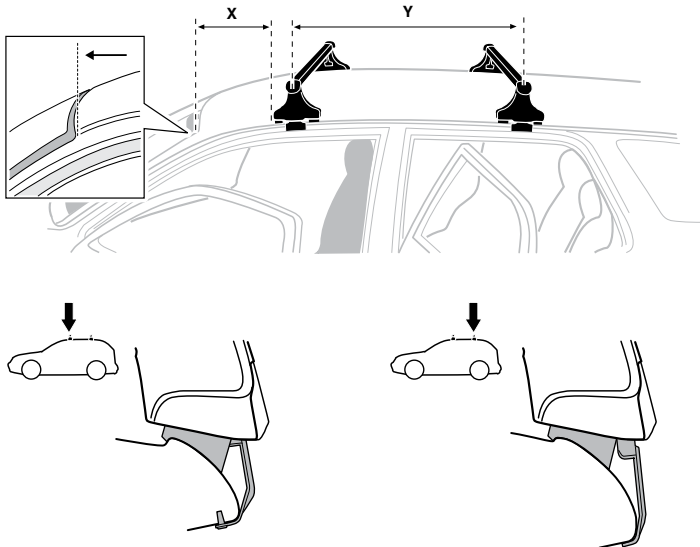
SEAT Mii, 3-dr Hatchback, 12-
SEAT Mii, 5-dr Hatchback, 12-
SKODA Citigo, 3-dr Hatchback, 12-
SKODA Citigo, 5-dr Hatchback, 12-
VOLKSWAGEN Up, 3-dr Hatchback, 12-
VOLKSWAGEN Up, 5-dr Hatchback, 12-



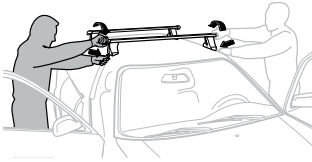
6



	X mm	Y mm	X inch	Y inch
SEAT Mii , 3-dr Hatchback, 12-	340 mm	720 mm	13 ³ / ₈ "	28 ³ / ₈ "
SEAT Mii , 5-dr Hatchback, 12-	340 mm	720 mm	13 ³ / ₈ "	28 ³ / ₈ "
SKODA Citigo , 3-dr Hatchback, 12-	340 mm	720 mm	13 ³ / ₈ "	28 ³ / ₈ "
SKODA Citigo , 5-dr Hatchback, 12-	340 mm	720 mm	13 ³ / ₈ "	28 ³ / ₈ "
VOLKSWAGEN Up , 3-dr Hatchback, 12-	340 mm	720 mm	13 ³ / ₈ "	28 ³ / ₈ "
VOLKSWAGEN Up , 5-dr Hatchback, 12-	340 mm	720 mm	13 ³ / ₈ "	28 ³ / ₈ "



7



GB/US	Tighten alternately
D	Die Schrauben abwechselnd anziehen
F	Serrer alternativement chaque côté
NL	Afwisselend aan de linker- en de rechterkant aandraaien
I	Alternare il serraggio delle viti
E	Apertar alternativamente
PT	Aperte alternadamente
S	Dra åt växelvis
FIN	Kierrä vuorotellen
EST	Pinguldage vaheldumisi
LAT	Pielveiciet pamišus
LIT	Užsukinėkite pakaitomis
PL	Śruby dokręcaj naprzemiennie
RU	Загряивайте попеременно

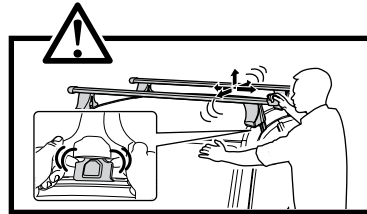
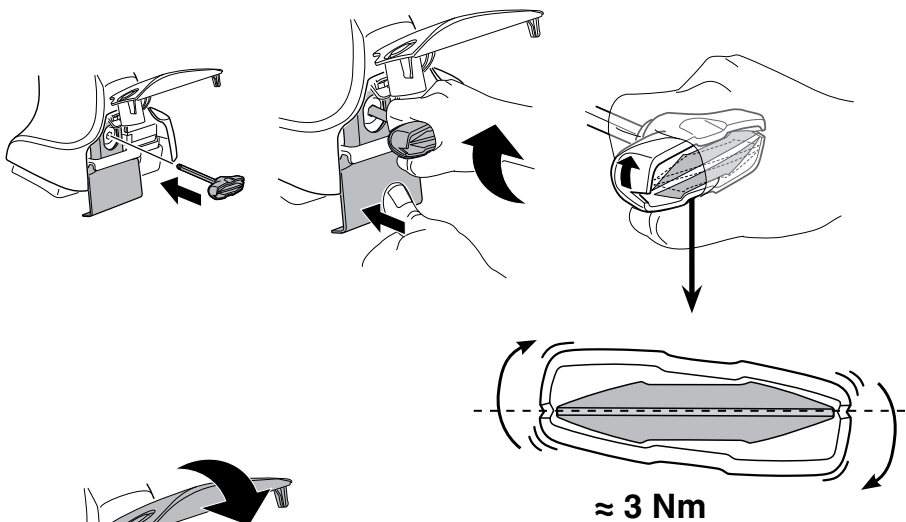
CZ	Pokręřta багаžnika dokręcaj naprzemiennie.
SK	Dofahajte striedavo
SLO	Privijajte izmenično.
HR	Naizmjenično zategnite
HU	Egymástól függetlenül szorítandó
GR	Σφιγίγτες εναλλάξ
TR	Dönüşümlü sıkın

中文 交替拧紧

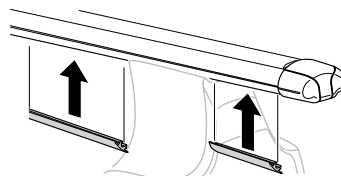
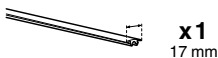
한국어 번갈아 가며 조이십시오.

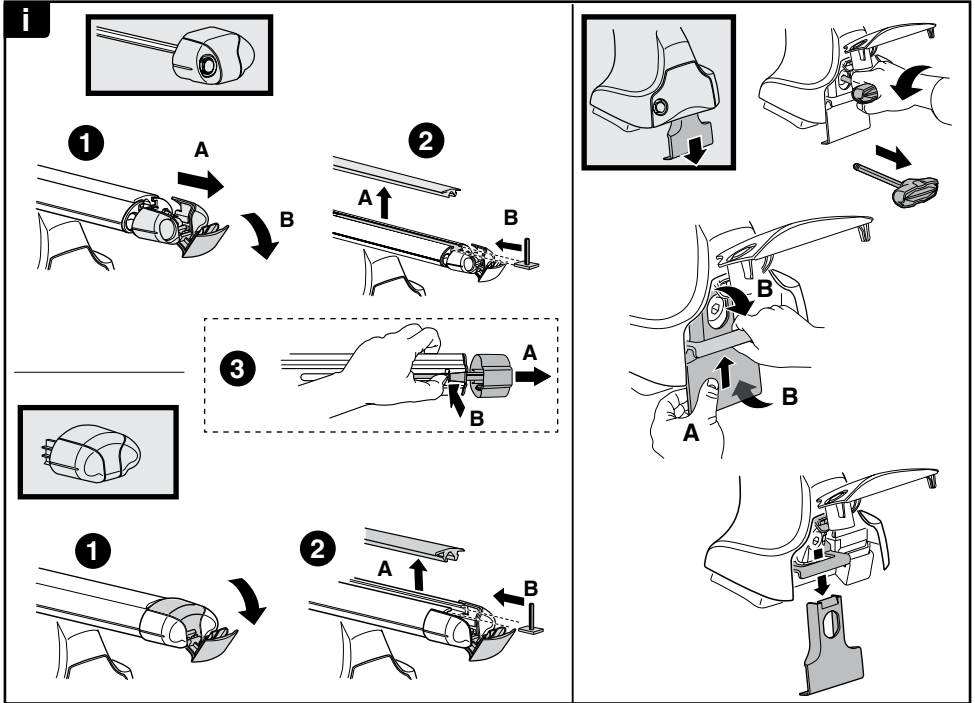
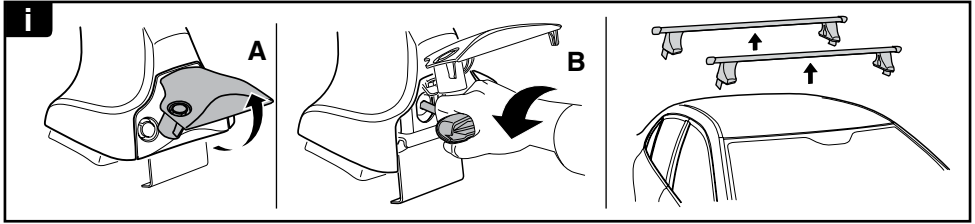
日本語 交互に締め付けてください。

ไทย ชันในแบบสลับ

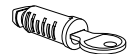
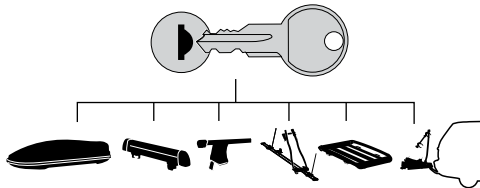


8





THULE
SWEDEN
**ONE
KEY
SYSTEM**



544 (x4)

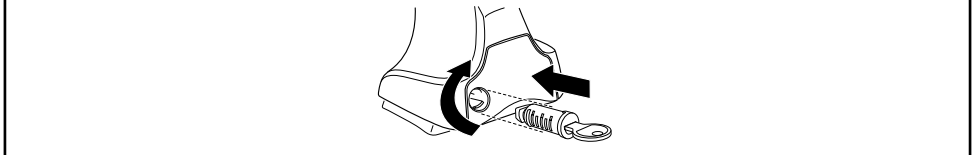
596 (x6)

588 (x8)

NA **510** (x10)

EUR **452** (x12)

ASIA



WW ▶ Thule Sweden AB, Box 69, 330 33 Hillerstorp, SWEDEN
NA ▶ Thule Inc., 42 Silvermine Road, Seymour, Connecticut 06483, USA

info@thule.com
customer.service@thule.com

www.thule.com

503-1672-02