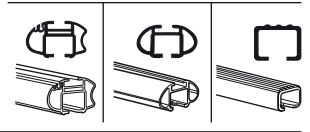
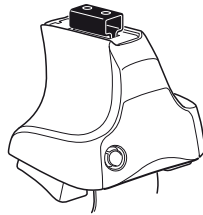


Kit 1476

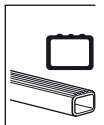
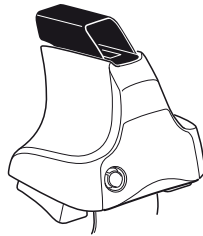
FORD Focus, 5-dr Hatchback, 06-*

* Without fixpoint

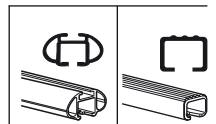
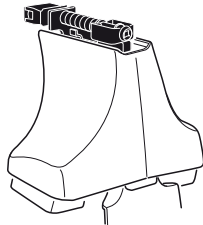
480R
754



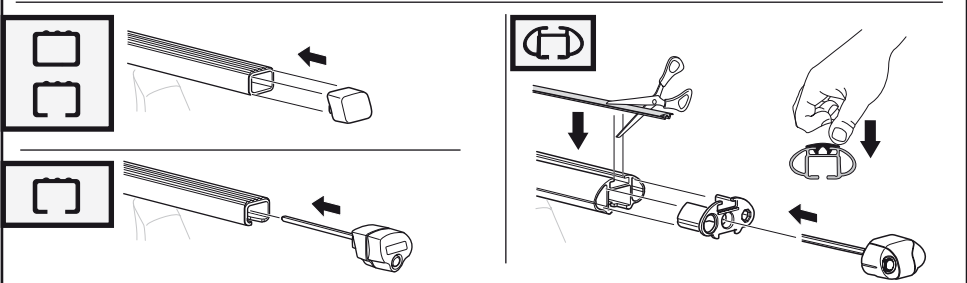
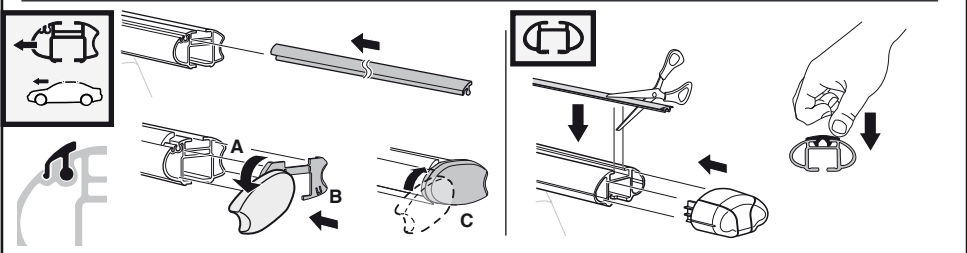
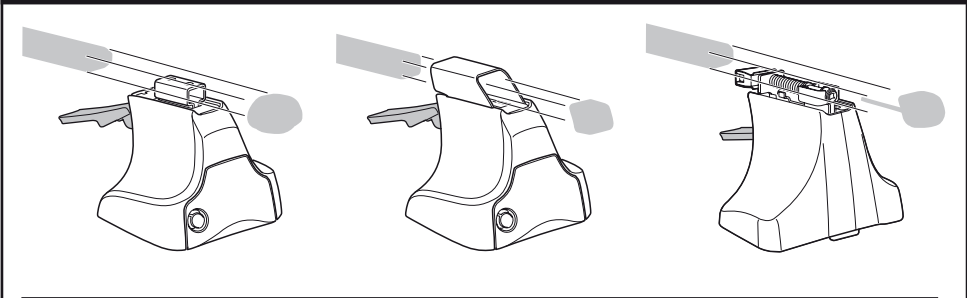
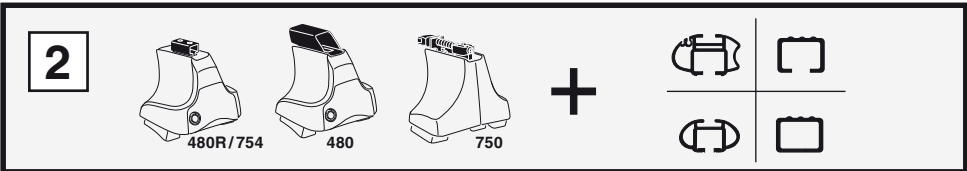
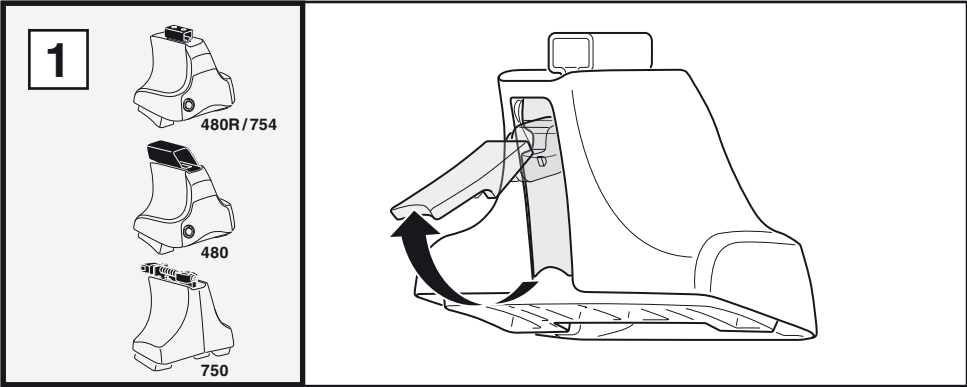
480



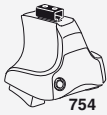
750



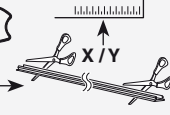
Kit



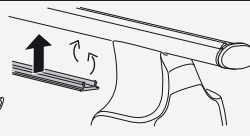
3



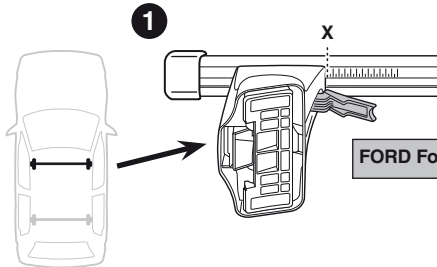
754



x / y



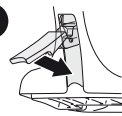
750



1

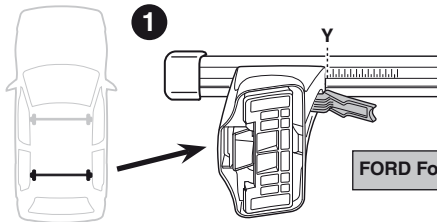
X

2



FORD Focus, 5-dr Hatchback, 06-

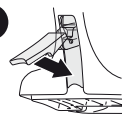
X
37,5



1

Y

2



FORD Focus, 5-dr Hatchback, 06-

Y
38,5

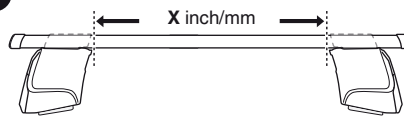


480R



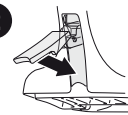
480

1



X inch/mm

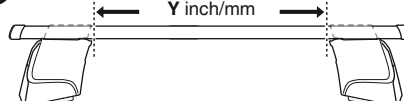
2



FORD Focus, 5-dr Hatchback, 06-

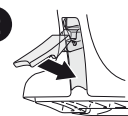
X inch	X mm
40 3/8"	1026 mm

1



Y inch/mm

2

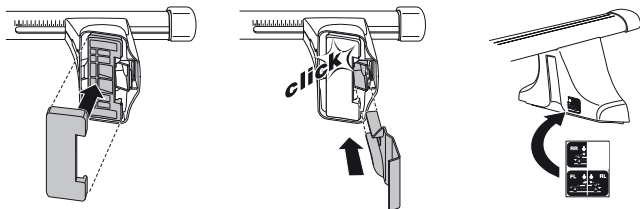
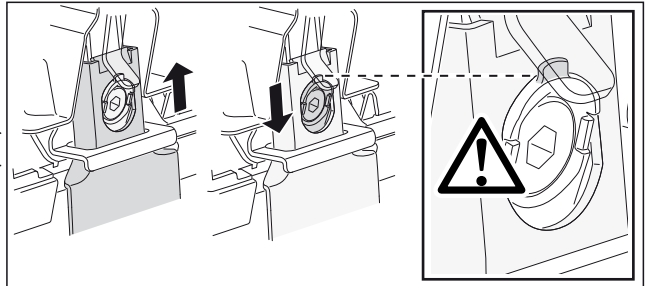
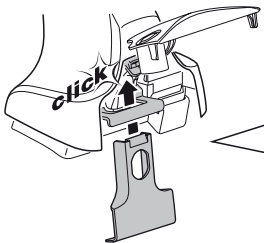
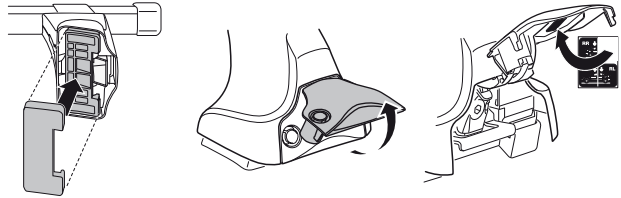
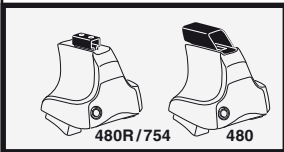
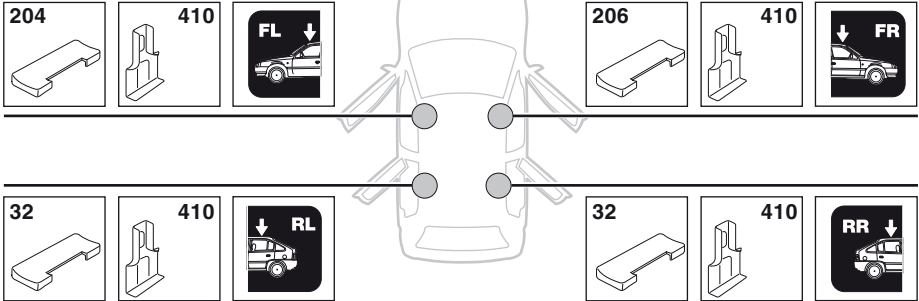


FORD Focus, 5-dr Hatchback, 06-

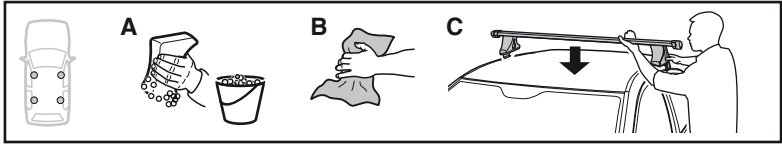
Y inch	Y mm
40 3/4"	1036 mm

4

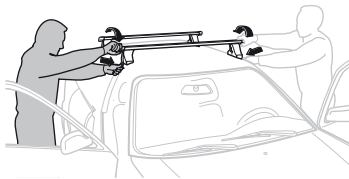
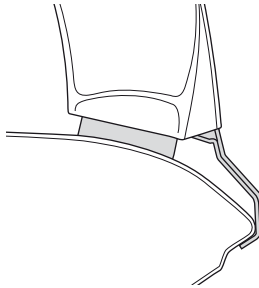
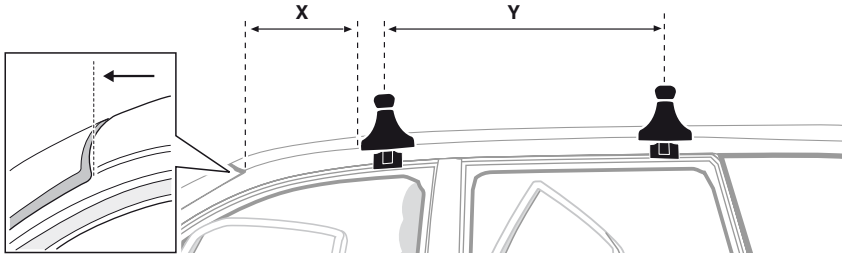
FORD Focus, 5-dr Hatchback, 06-



5



	X mm	Y mm	X inch	Y inch
FORD Focus, 5-dr Hatchback, 06–	270 mm	625 mm	10 ⁵ / ₈ "	24 ⁵ / ₈ "



GB/US Tighten alternately

D Die Schrauben abwechselnd anziehen

F Serrer alternativement chaque côté

NL Afwisselend aan de linker- en de rechterkant aandraaien

I Alternare il serraggio delle viti

E Apertar alternativamente

PT Aperte alternadamente

S Dra åt växelvis

FIN Kierrä vuorotellen

EST Pinguldage vaheldumisi

LAT Pielvelciēt pamīšus

LIT Užsukinėkite pakaitomis

PL Śruby dokręcaj naprzemiennie

RU Затягивайте попеременно

CZ Pokręťta bagažníka dokręcaj dokręcaj naprzemiennie.

SK Doťahujte striedavo

SLO Privijajte izmenično.

HR Naizmjenično zategnite

HU Egymástól függetlenül szorítandó

GR Σφιγγετε εναλλάξ

TR Dönüşümlü sıkın

中文 交替拧紧

한국어 번갈아 가며 조이십시오.

日本語 交互に締め付けてください。

ไทย ชันโนแบบสลับ

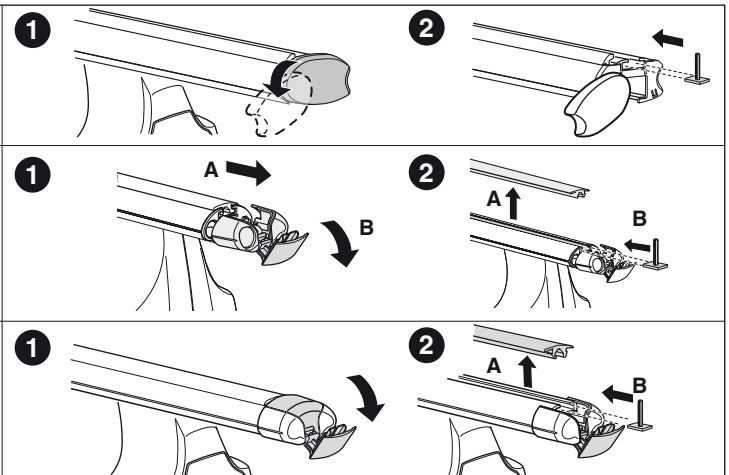
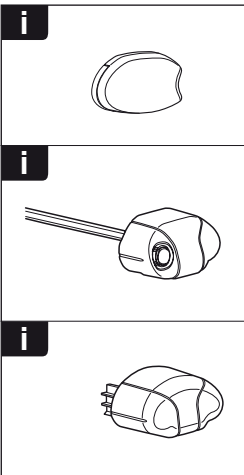
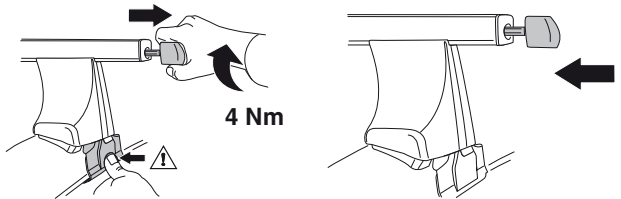
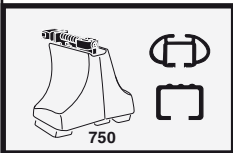
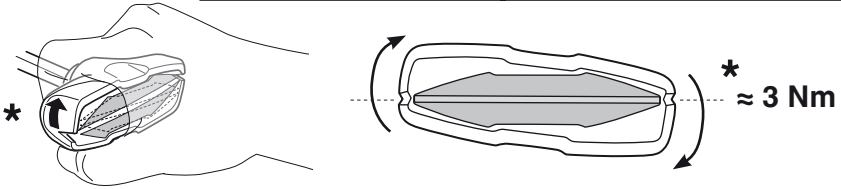
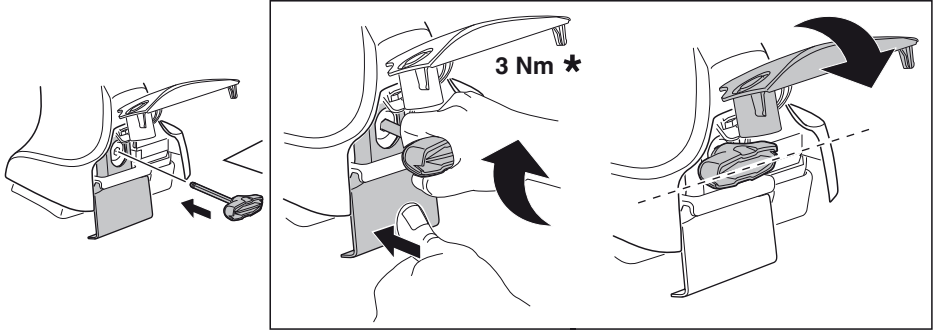
6

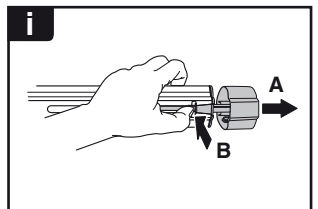
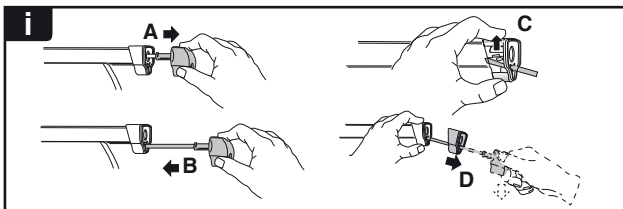
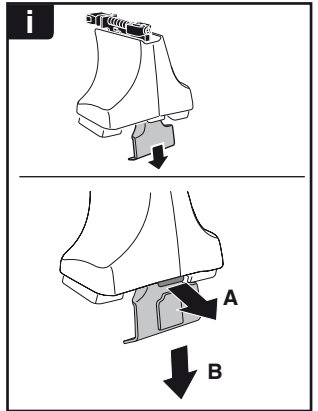
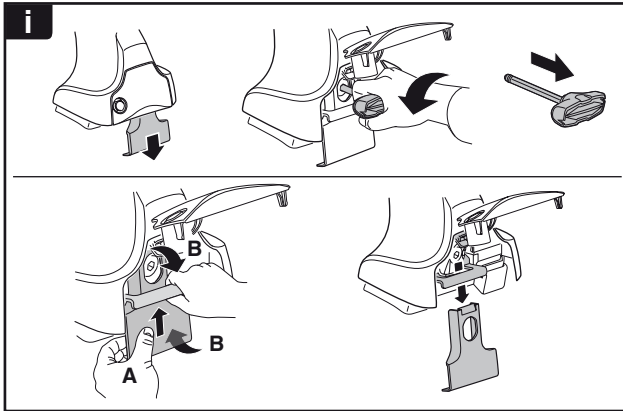
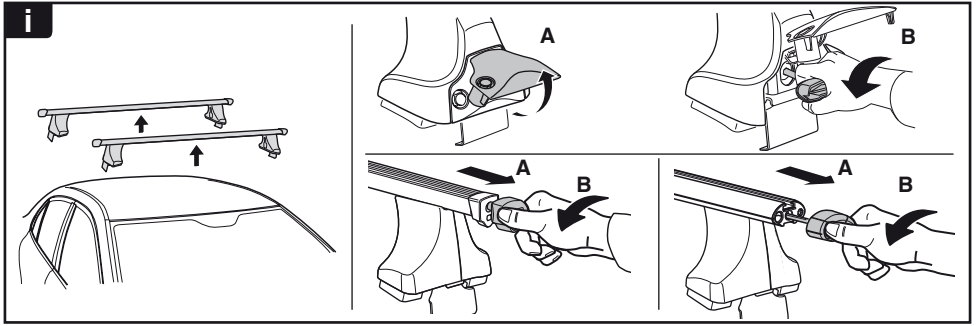


480R/754

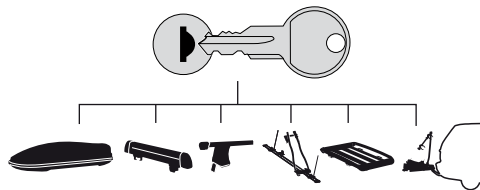


480

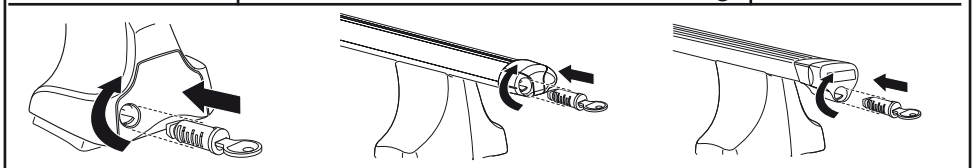




THULE
SWEDEN
**ONE
KEY
SYSTEM**



		(x4)
		(x6)
		(x8)
NA		(x10)
EUR		(x12)
ASIA		(x12)



WW ▶ Thule Sweden AB, Box 69, 330 33 Hillerstorp, SWEDEN
NA ▶ Thule Inc., 42 Silvermine Road, Seymour, Connecticut 06483, USA

info@thule.com
customer.service@thule.com

www.thule.com