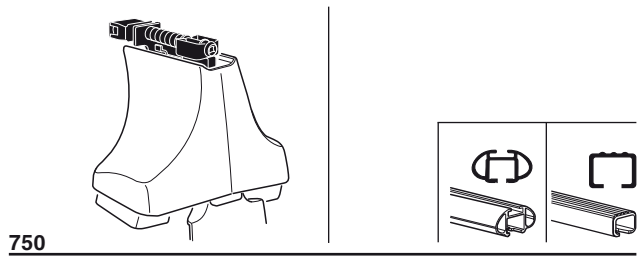
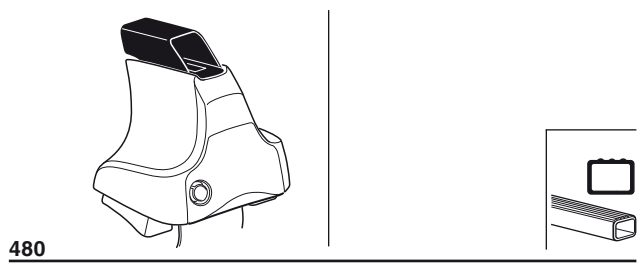
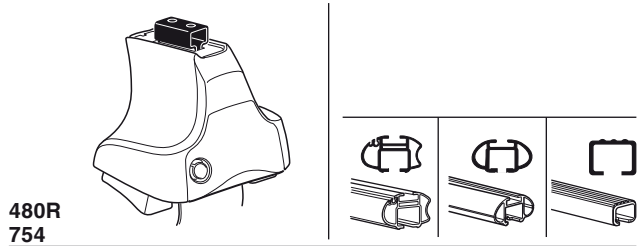


Kit 1445

FORD Mondeo (Mk.III.), 4-dr Sedan, 07–
FORD Mondeo (Mk.III.), 5-dr Hatchback, 07–



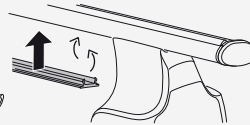
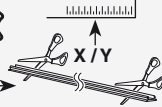
Kit



3



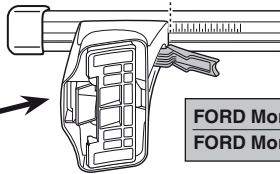
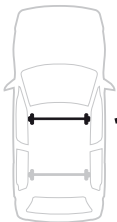
754



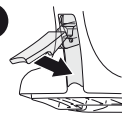
750



1

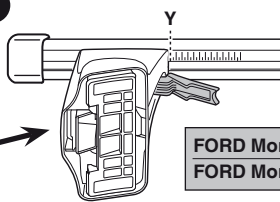


2

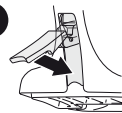


	X
FORD Mondeo (Mk.III.), 4-dr Sedan, 07-	41
FORD Mondeo (Mk.III.), 5-dr Hatchback, 07-	41

1



2



	Y
FORD Mondeo (Mk.III.), 4-dr Sedan, 07-	37
FORD Mondeo (Mk.III.), 5-dr Hatchback, 07-	37

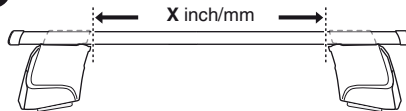


480R

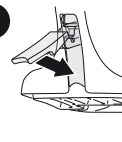


480

1

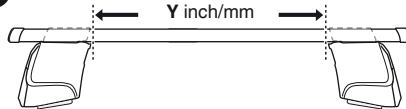


2

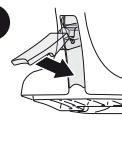


	X inch	X mm
FORD Mondeo (Mk.III.), 4-dr Sedan, 07-	41 3/4"	1061 mm
FORD Mondeo (Mk.III.), 5-dr Hatchback, 07-	41 3/4"	1061 mm

1



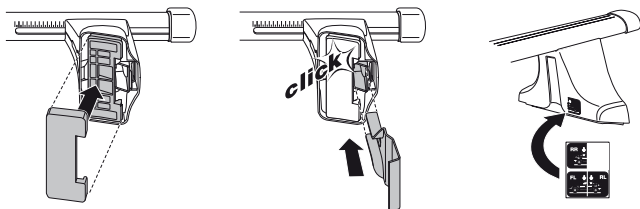
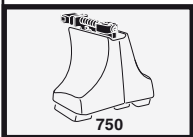
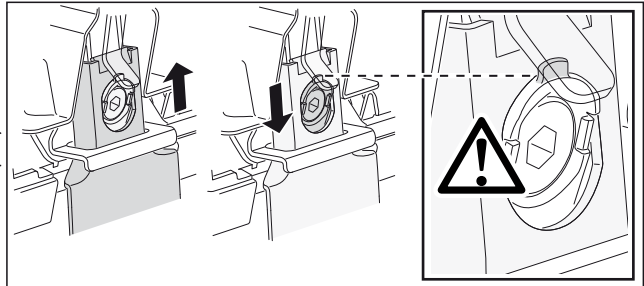
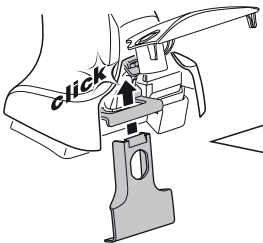
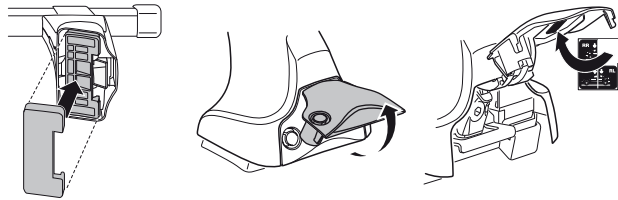
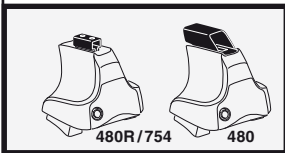
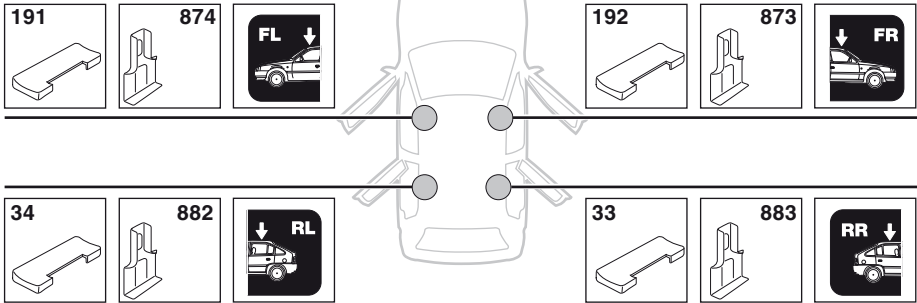
2



	Y inch	Y mm
FORD Mondeo (Mk.III.), 4-dr Sedan, 07-	40 1/4"	1021 mm
FORD Mondeo (Mk.III.), 5-dr Hatchback, 07-	40 1/4"	1021 mm

4

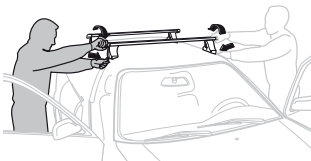
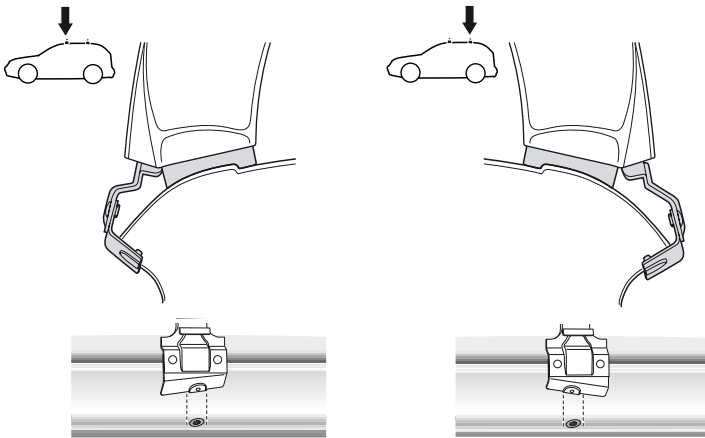
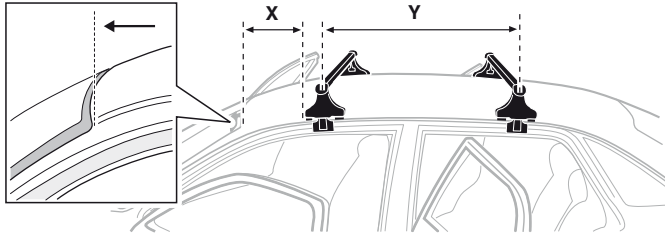
FORD Mondeo (Mk.III.), 4-dr Sedan, 07–
 FORD Mondeo (Mk.III.), 5-dr Hatchback, 07–



5



	X mm	Y mm	X inch	Y inch
FORD Mondeo (Mk.III.), 4-dr Sedan, 07-	270 mm	820 mm	10 5/8"	32 1/4"
FORD Mondeo (Mk.III.), 5-dr Hatchback, 07-	270 mm	820 mm	10 5/8"	32 1/4"



- | | | | |
|--------------|---|------------|---|
| GB/US | Tighten alternately | CZ | Pokręťta bagažníka dokręčaj dokręčaj naprzemiennie. |
| D | Die Schrauben abwechselnd anziehen | SK | Dotahujte striedavo |
| F | Serrer alternativement chaque côté | SLO | Privijajte izmenično. |
| NL | Afwisselend aan de linker- en de rechterkant aandraaien | HR | Naizmjenično zategnite |
| I | Alternare il serraggio delle viti | HU | Egy mástól függetlenül szorítandó |
| E | Apretar alternativamente | GR | Σφιγίγες εναλλάξ |
| PT | Aperte alternadamente | TR | Dönüştürümlü sıkın |
| S | Dra åt växelvis | 中文 | 交替拧紧 |
| FIN | Kierrä vuorotellen | 한국어 | 번갈아 가며 조이십시오. |
| EST | Pinguldage vaheldumisi | 日本語 | 交互に締め付けてください。 |
| LAT | Pievelciet pamišus | ไทย | ขันแบบสลับ |
| LIT | Užsukinėkite pakaitomis | | |
| PL | Śruby dokręcaj naprzemiennie | | |
| RU | Затягивайте попеременно | | |

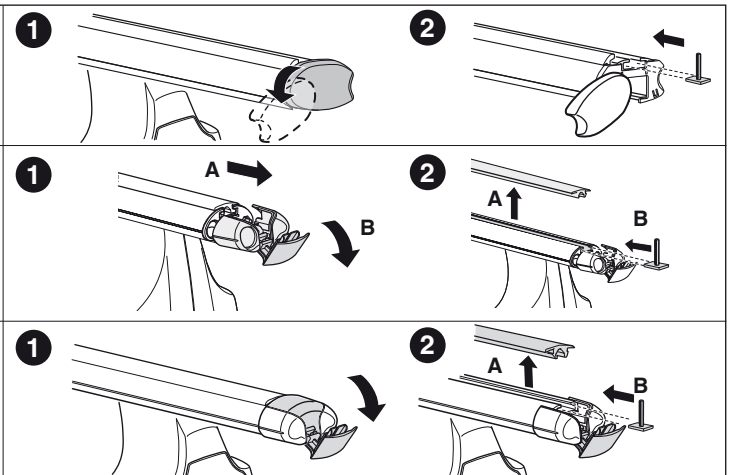
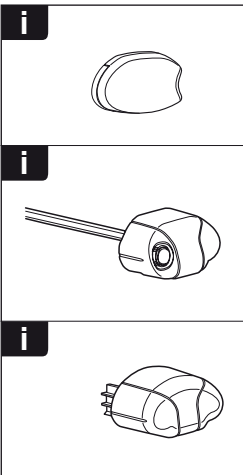
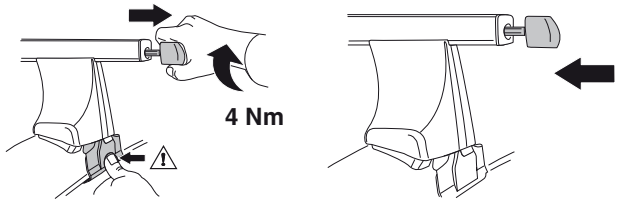
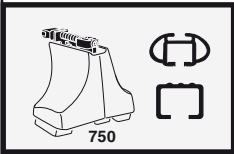
6



480R/754

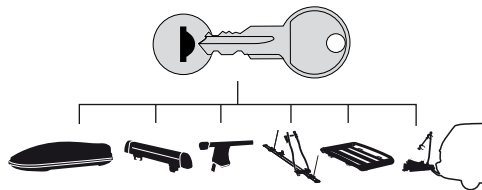


480





THULE
SWEDEN
**ONE
KEY
SYSTEM**



- 544 (x4)
- 596 (x6)
- 588 (x8)
- NA 510 (x10)
- EUR 452 (x12)
- ASIA 452 (x12)



WW ▶ Thule Sweden AB, Box 69, 330 33 Hillerstorp, SWEDEN
NA ▶ Thule Inc., 42 Silvermine Road, Seymour, Connecticut 06483, USA

info@thule.com
customer.service@thule.com

www.thule.com