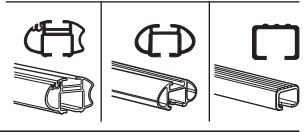
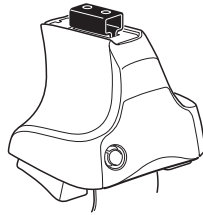


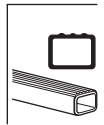
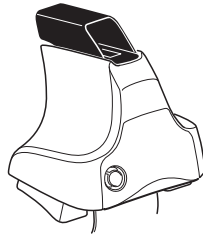
Kit 1409

MITSUBISHI Outlander II, 5-dr SUV, 05-

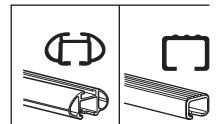
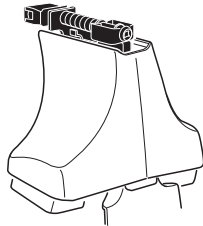
480R
754



480



750



xx kg
 xx lbs

7 kg
 15,4 lbs

Max. 50 kg
Max. 110 lbs

80 km/h 50 Mph
 130 km/h 80 Mph
 40 km/h 25 Mph
km/h Mph

THULE

Kit XXXX
 instructions

x1

x4

x4

x4

480R/754

x1

x4

x4

x4

480

x1

x4

x4

x4

750

x2 x2 x2 x4	x2	x2 x2 x4 x4	x2 x2 x2	x2
----------------------	----	----------------------	----------------	----

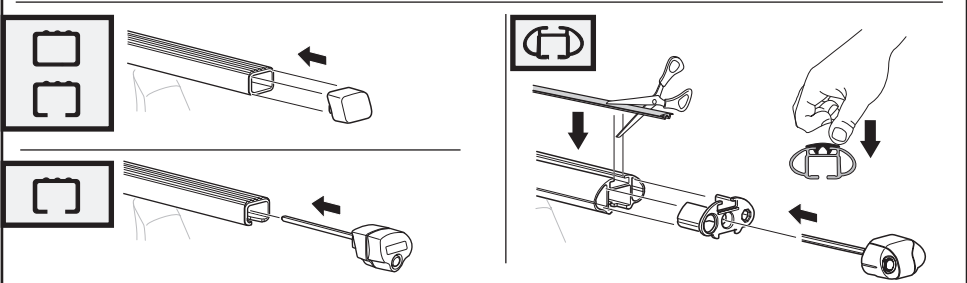
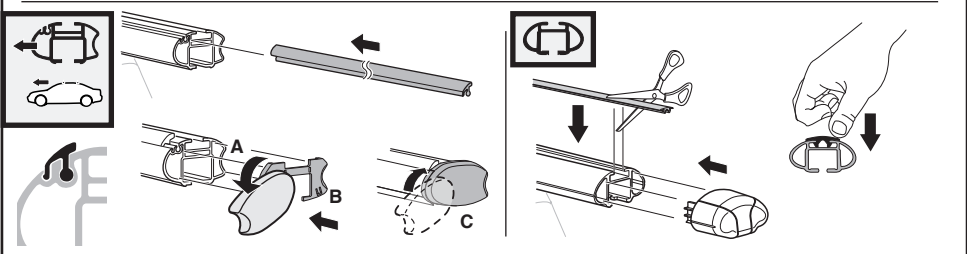
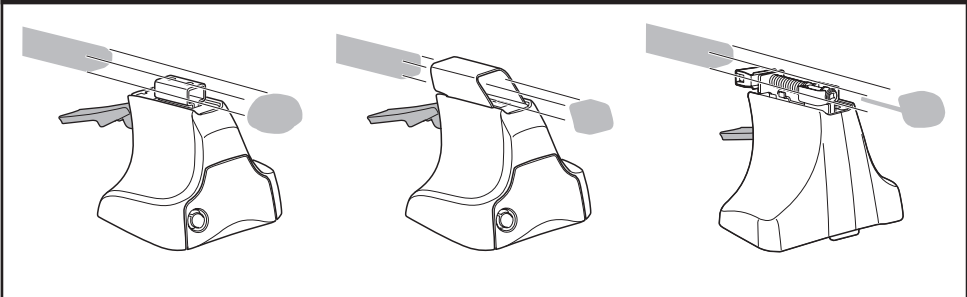
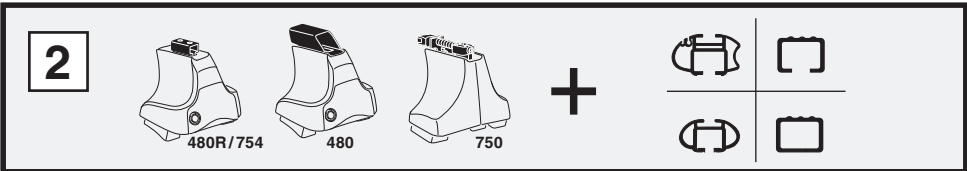
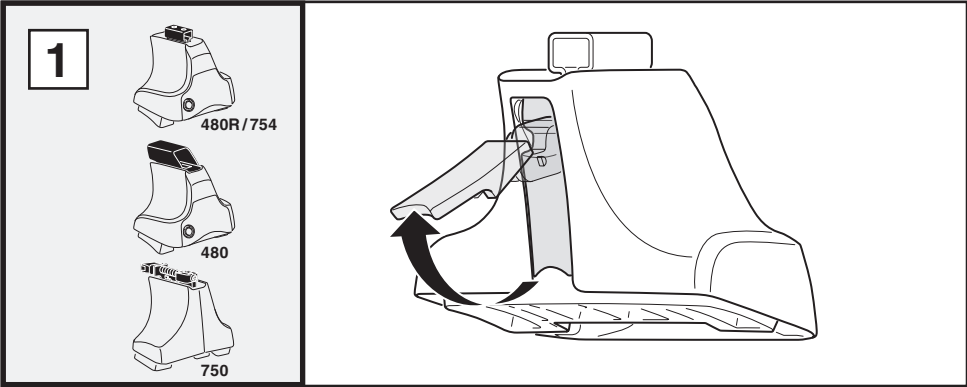
791 x2

792 x2

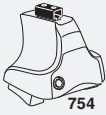
239 x4

x1

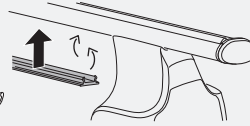
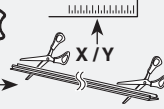
Kit



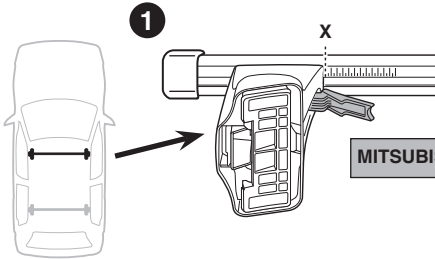
3



754



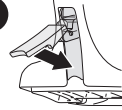
750



1

X

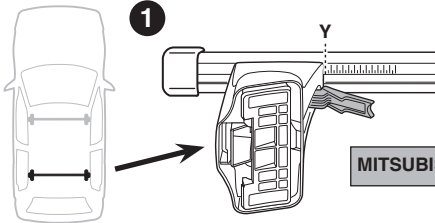
2



MITSUBISHI Outlander II, 5-dr SUV, 05-

X

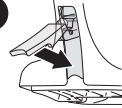
48



1

Y

2



MITSUBISHI Outlander II, 5-dr SUV, 05-

Y

43,5

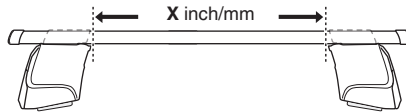


480R

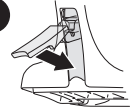


480

1



2



MITSUBISHI Outlander II, 5-dr SUV, 05-

X inch

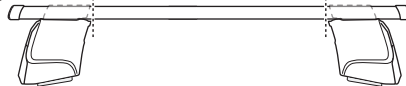
X mm

44 1/2"

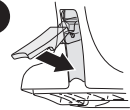
1131 mm



1



2



MITSUBISHI Outlander II, 5-dr SUV, 05-

Y inch

Y mm

42 3/4"

1086 mm

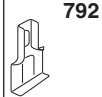
4

MITSUBISHI Outlander II, 5-dr SUV, 05-

239



792



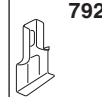
FL



239



792



FR



239



791



RL



239



791



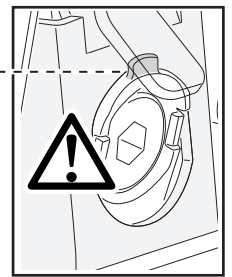
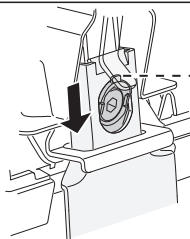
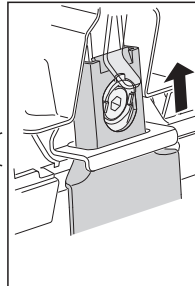
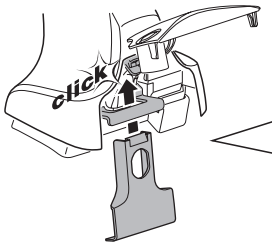
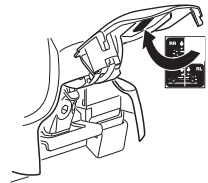
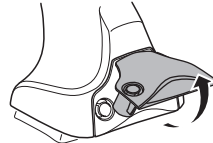
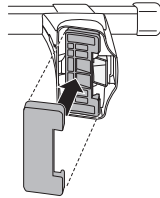
RR



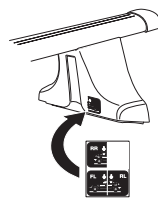
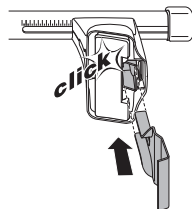
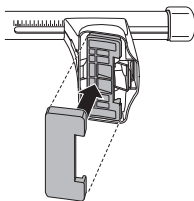
480R/754



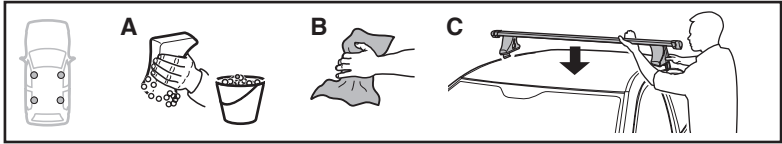
480



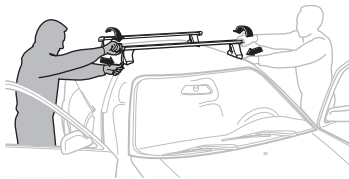
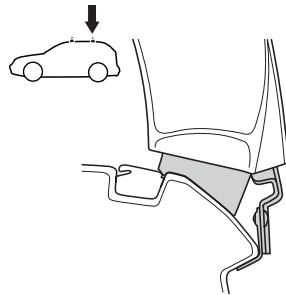
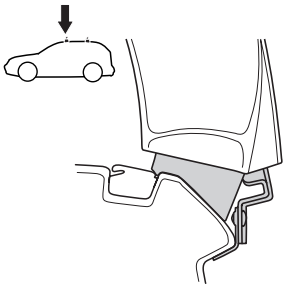
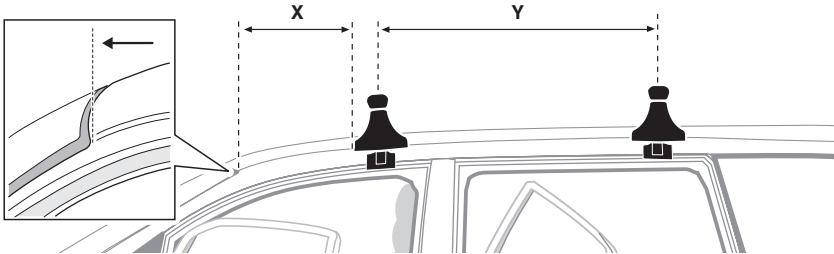
750



5



	X mm	Y mm	X inch	Y inch
MITSUBISHI Outlander II, 5-dr SUV, 05-	440 mm	800 mm	17 ³ / ₈ "	31 ¹ / ₂ "



GB/US Tighten alternately

D Die Schrauben abwechselnd anziehen

F Serrer alternativement chaque côté

NL Afwisselend aan de linker- en de rechterkant aandraaien

I Alternare il serraggio delle viti

E Apertar alternativamente

PT Aperte alternadamente

S Dra åt växelvis

FIN Kierrä vuorotellen

EST Pinguldage vaheldumisi

LAT Pieveļciet pamišus

LIT Užsukinėkite pakaitomis

PL Śruby dokręcaj naprzemiennie

RU Затягивайте попеременно

CZ Pokręťta bagażníka dokręcaj dokręcaj naprzemiennie.

SK Doťahujte striedavo

SLO Privijajte izmenično.

HR Naizmjenično zategnite

HU Egymástól függetlenül szorítandó

GR Σφιγγετε εναλλάξ

TR Dönüşümlü sıkın

中文 交替拧紧

한국어 번갈아 가며 조이십시오.

日本語 交互に締め付けてください。

ไทย ชันโนแบบสลับ

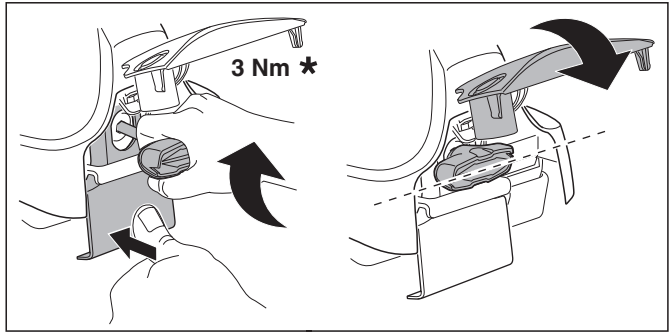
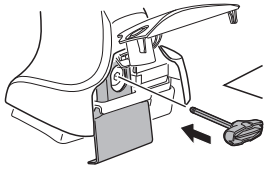
6



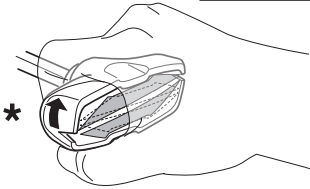
480R/754



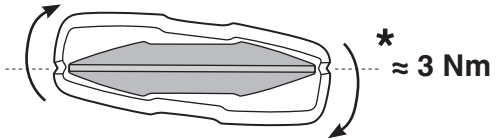
480



3 Nm *



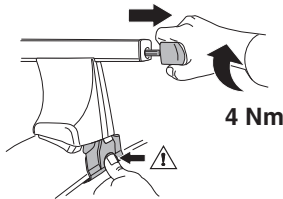
*



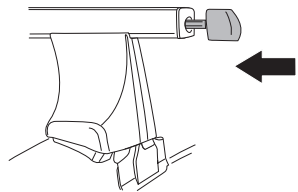
* ≈ 3 Nm



750



4 Nm



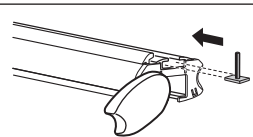
i



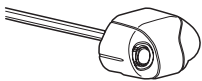
1



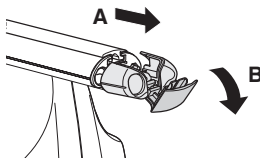
2



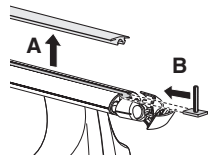
i



1



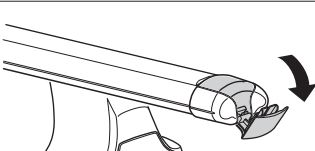
2



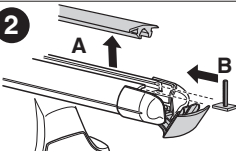
i

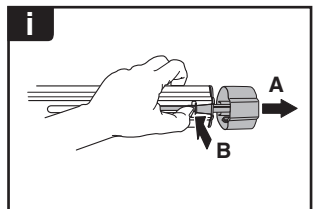
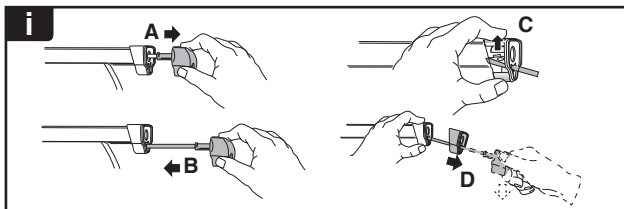
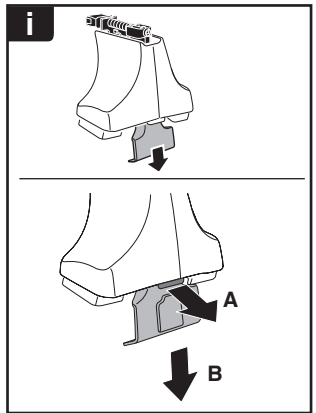
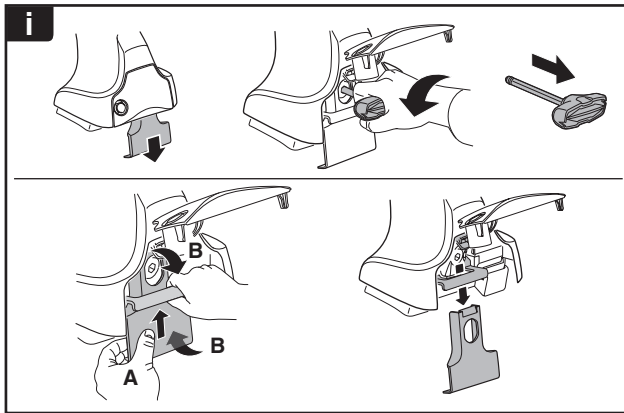
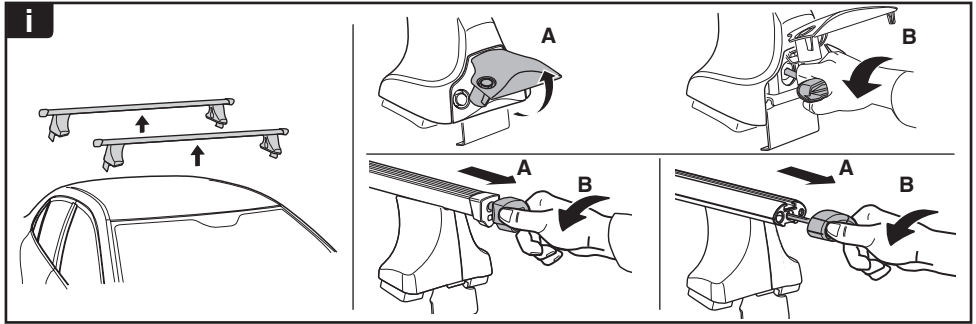


1

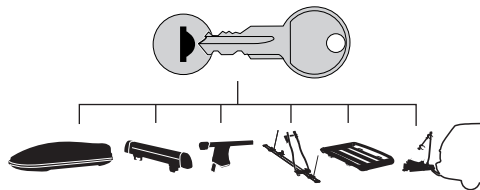


2

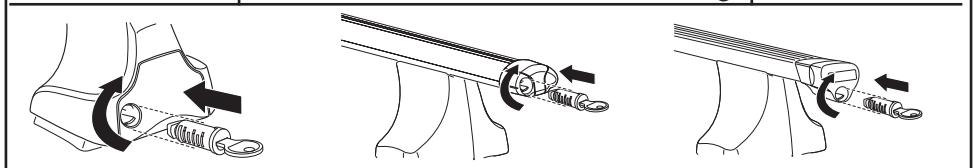




THULE
SWEDEN
**ONE
KEY
SYSTEM**



- 544 (x4)
- 596 (x6)
- 588 (x8)
- NA 510 (x10)
- EUR 452 (x12)
- ASIA



WW ▶ Thule Sweden AB, Box 69, 330 33 Hillerstorp, SWEDEN
NA ▶ Thule Inc., 42 Silvermine Road, Seymour, Connecticut 06483, USA

info@thule.com
customer.service@thule.com

www.thule.com